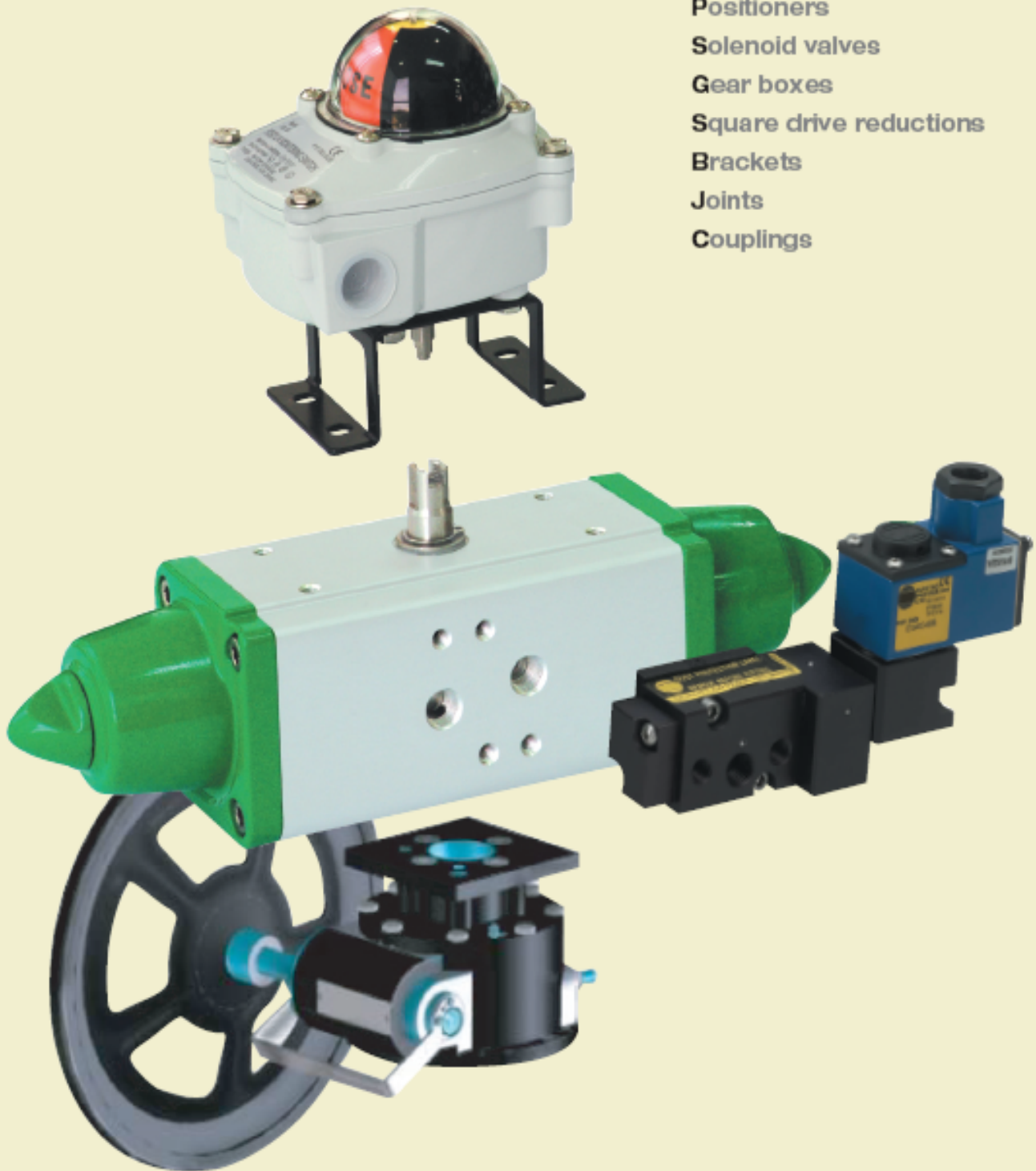
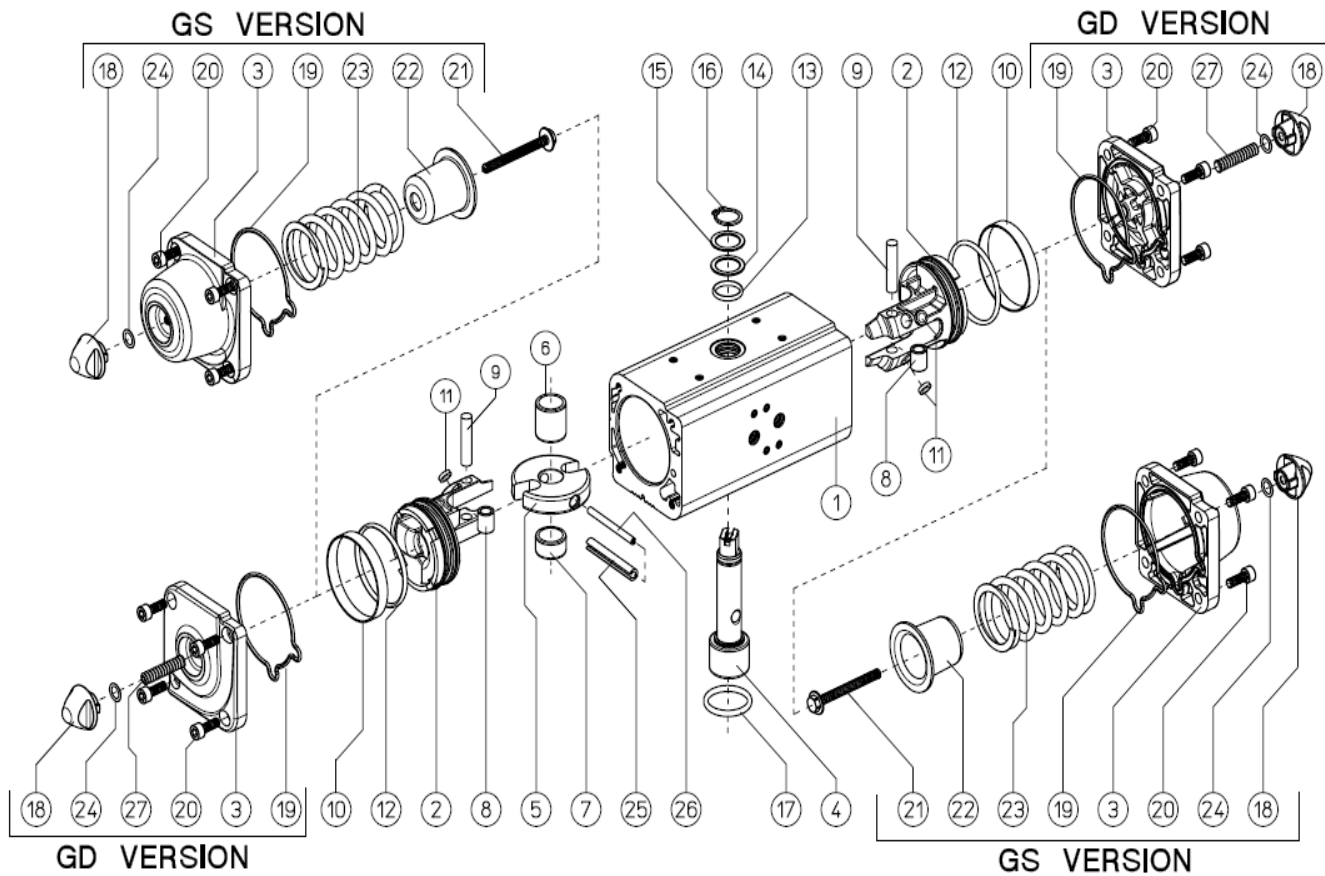




## ACCESSORIES CATALOG >>>

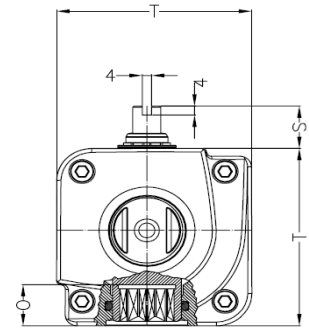
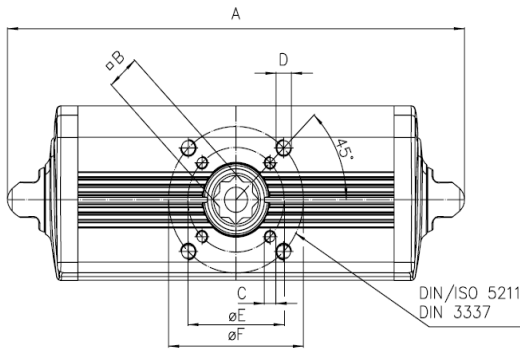
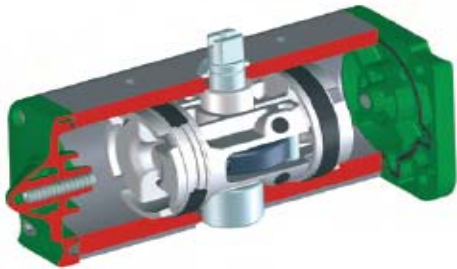
Switch boxes  
Positioners  
Solenoid valves  
Gear boxes  
Square drive reductions  
Brackets  
Joints  
Couplings



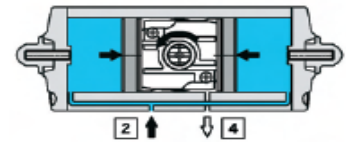


## MATERIALS SPECIFICATION

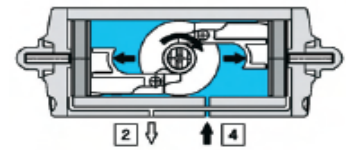
POS.	DENOMINATION	Q.	MATERIALS	STANDARDS
1	Cylinder	1	Aluminium alloy	EN AW 6063 Anodized
2	Piston	2	Aluminium alloy	EN AB 46100
3	Cap	2	Aluminium alloy	EN AB 46100 Painted
4	Shaft	1	Stainless steel	AISI 303-DIN 1.4305
5	Scotch yoke	1	Steel alloy	UNI 90MnVcr8Ku-DIN 1.2842 Ardenered
6	Support bush	1	Acetalitic resin	
7	Shaft support	1	Acetalitic resin	
8	Bush	2	Steel alloy	UNI 110w4Ku-DIN 1.2516
9	Rotative sleeve	2	Steel alloy	UNI 6364A-DIN 6325
10*	Dynamic seal (piston)	2	P.T.F.E. Carbo-Graphite filled	
11*	Piston' s support	4	P.T.F.E. Carbo-Graphite filled	
12*	Piston o-ring	2	Nitrilic rubber	
13*	O-ring (upper sealing shaft)	1	Viton	
14	Extenal support ring	1	Acetalitic resin	
15	Washer	1	Stainless steel	UNI 3653-DIN 471
16	Seeger	1	Stainless steel	UNI 3653-DIN 471
17*	O-ring (low sealing shaft)	1	Viton	
18	Nut	1	Aluminium alloy	EN AB46100 Painted
19*	Cap o-ring	2	Nitrilic rubber	
20	Screw	8	Stainless steel	AISI 304-DIN 1.4301
21	Spring loading screw	2	Steel	UNI 3740/65 8G Galvanized
22	Spring cap	2	Steel	DIN 1.0315 Galvanized
23	Spring	2	Steel	DIN 1.7102
24*	O-ring	2	Nitrilic rubber	
25	External elastic pin of the yoke	1	Steel	DIN 1481
26	Intenal elastic pin of the yoke	1	Steel	DIN 1481
27	Centering ring	1	Aluminium alloy	DIN AIMaSiPb Anodized
28	Stroke adjustment screw	2	Stainless steel	AISI 304-DIN 1.4301



ACTUATOR SIZE	NOMINAL TORQUE Nm at 5.6 Bar	ISO FLANGE	A	B	E	F	T	S	C-depth	D-depth	Air Consumption l/cycle
GD08	8	F03	70	9	36	-	43.2	15	M5-6	-	0,034
GD15	15	F03	159	11	36	40	52.2	20	M5-8	M5-08	0,08
		F04									
GD30	30	F03-F05	174	11	36	50	59.2	20	M5-8	M6-9	0,15
GD60	60	F05-F07	198	14	50	70	70.4	20	M6-9	M8-12	0,30
GD106	106	F05-F07	236.5	17	50	70	83.3	20	M6-9	M8-12	0,55
GD180	180	F07-F10	289.9	22	70	102	107	30	M8-12	M10-15	0,95
GD240	240	F07-F10	313.6	22	70	102	111.1	30	M8-12	M10-15	1,3
GD360	360	F07-F10	339.3	22	70	102	118	30	M8-12	M10-15	1,8
GD480	480	F10-F12	387.7	27	102	125	134.9	30	M10-15	M12-18	2,6
GD720	720	F10-F12	433	27	102	125	148	30	M10-15	M12-18	3,5
GD960	960	F12	479.4	36	125	-	168	30	M12-18	-	4,9
GD1440	1440	F14	567	36	-	140	186	30	-	M16-24	7,6
GD1920	1920	F12-F16	601	46	125	165	207.7	30	M12-18	M20-30	10,2
GD2880	2880	F16	667	46	165	-	311	30	M20-30	-	20,0
GD3840	3840	F16	765	46	165	-	298	30	M20-30	-	24,3
GD5760	5760	F25	885	55	-	254	361	30	M16-24	-	38,0
GD8000	8000	F25	1044	55	-	254	394	30	M16-24	-	50,0



open position valve



close position valve

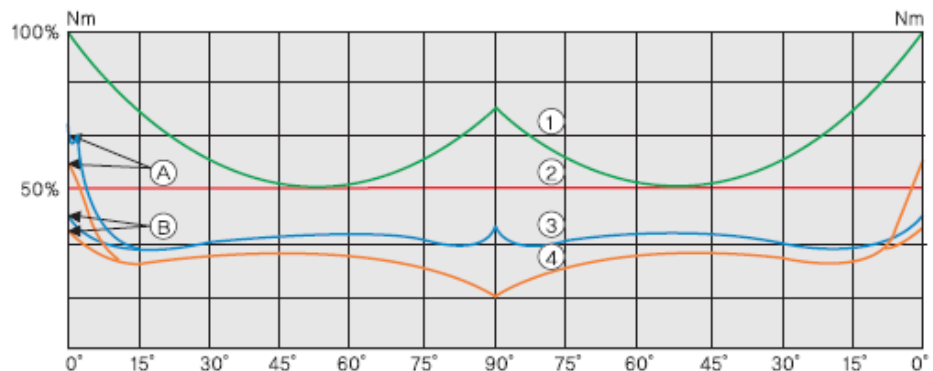
**Output Torque**

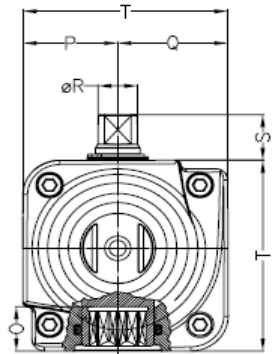
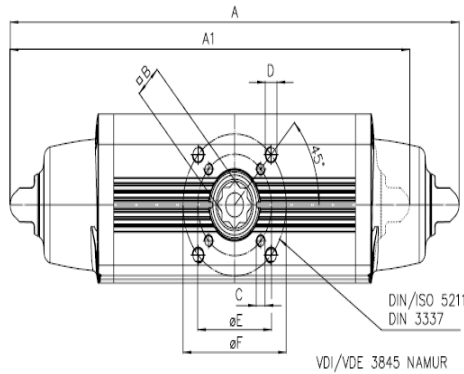
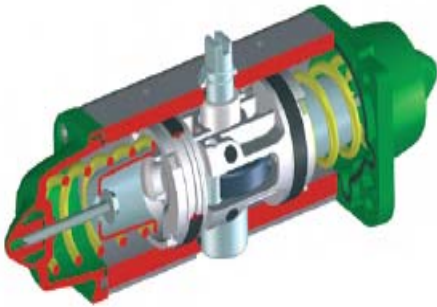
Actuatech " Scotch yoke "

 (Open) (Close)  
 (N.m)

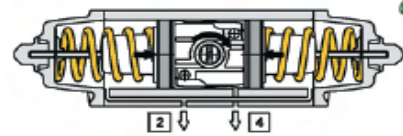
- 1- Actuator Scotch yoke ( Double Acting type)
  - 2- Rack & Pinion (Double acting type)
  - 3- Ball Valve
  - 4- Butterfly Valve
  - 5- Actuatech Scotch yoke ( Spring Return type)
  - 6- Rack & Pinion ( Spring Return type)
- A** (Closed) Breake Torque  
**B** (Closed) Breake Torque

"DA" Double Acting actuators output torques (Nm) Table

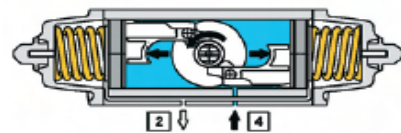




ACTUATOR SIZE	NOMINAL TORQUE Nm at 5.6 Bar	ISO FLANGE	A	B	E	F	T	S	C-depth	D-depth	Air Consumption l/cycle
GS15	15	F03-F05	233.3	11	36	50	59.2	20	M6-8	M6-9	0.09
GS30	30	F05-F07	259	14	50	70	70.4	20	M6-9	M8-12	0.17
GS53	53	F05-F07	303.7	17	50	70	83.3	20	M6-9	M8-12	0.30
GS90	90	F07-F10	393.7	22	70	102	107	30	M8-12	M10-15	0.55
GS120	120	F07-F10	409.6	22	70	102	111.1	30	M8-12	M10-15	0.80
GS180	180	F07-F10	467.4	22	70	102	118	30	M8-12	M10-15	1.0
GS240	240	F10-F12	520.5	27	102	125	134.9	30	M10-15	M12-18	1.5
GS360	360	F10-F12	613	27	102	125	148	30	M10-15	M12-18	2.0
GS480	480	F12	648	36	125		168	30	M12-18	-	2.8
GS720	720	F14	798	36	-	140	186	30	-	M16-24	4.2
GS960	960	F12-F16	828	46	140	165	207.7	30	M12-18	M20-30	5.9
GS1440	1440	F16	834	46	-	165	311	30	M20-30	-	11.0
GS1920	1920	F16	975	46	-	165	240.8	30	M20-30	-	12.5
GS2880	2880	F16	1201	46	-	165	361	30	M20-30	-	21.0
GS4000	4000	F25	1370	55	-	254	394	30	M16-24	-	29.1

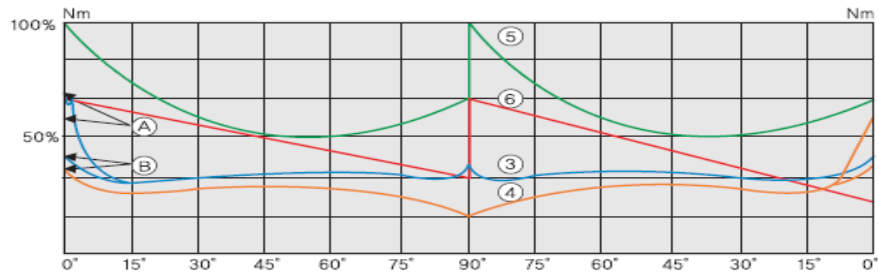


close position valve



open position valve

"SR" spring return actuators output torques (Nm) Table



SIZE	Open	Close	Cycle	SIZE	Open	Close	Cycle
GD08	0.03	0.03	0.06	GS15	0.11	0.13	0.24
GD15	0.04	0.04	0.08	GS30	0.23	0.27	0.5
GD30	0.06	0.07	0.13	GS53	0.41	0.48	0.89
GD60	0.1	0.11	0.21	GS90	0.6	0.7	1.3
GD106	0.2	0.21	0.41	GS120	0.79	0.92	1.71
GD180	0.32	0.31	0.63	GS180	1.29	1.41	2.7
GD240	0.41	0.4	0.81	GS240	1.5	1.7	3.2
GD360	0.6	0.58	1.18	GS360	1.7	1.9	3.6
GD480	0.78	0.76	1.54	GS480	1.8	2	3.8
GD720	1	1.1	2.1	GS720	2.2	2.5	4.7
GD960	1.5	1.6	3.1	GS960	2.9	3.4	6.3
GD1440	2.3	2.4	4.7	GS1440	5	6	11
GD1920	3.1	3.2	6.3	GS1920	7	8	15
GD2880	4.5	4.5	9	GS2880	9	11	20
GD3840	6	6	12	GS4000	12	13	25
GD5760	8	8	16				
GD8000	11	11	22				